

CCAS0262-0010410FO

Loven

Loven Wall Hung Basin W550

#### STYLE SEGMENT

- Modern

#### KEY SPECIFICATIONS

- Installation Type: WH w/ Semi Pedestal
- Product Dimensions: 550 x 450 x 195
- Material: Vitreous China
- Color: White Heat II
- Overflow Hole: With
- Faucet Ledge: Yes
- Included Components: N/A



#### SHIPPING WEIGHT

- Net Weight: 22
- Gross Weight: 22

#### KEY TECHNOLOGIES AND FEATURES

##### HYGIENE

- Complies with American Standard Quality Standards

##### COMFORT

- Complies with American Standard Quality Standards

##### CONVENIENCE

- Complies with American Standard Quality Standards

##### DURABILITY

- Complies with American Standard Quality Standards

##### SUSTAINABILITY

- Complies with American Standard Quality Standards

##### SAFETY

- Complies with American Standard Quality Standards

##### OTHERS

- NIL

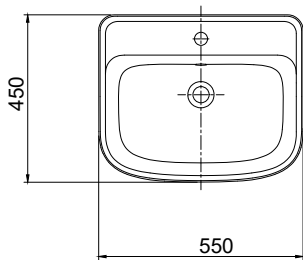
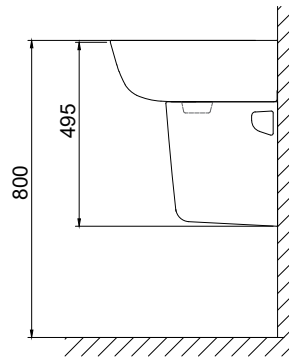
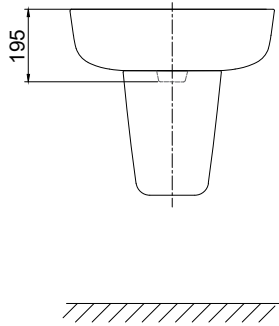
#### STANDARDS AND CERTIFICATIONS

- GB/T 4897-2015
- TCVN 6073:2005

CCAS0262-0010410FO

Loven

Loven Wall Hung Basin W550



CCAS0262-0010410FO

Loven

## Loven Wall Hung Basin W550

<b>Item</b>	Description	LOVEN Wall hung basin 550, APAC
<b>Installations</b>	Type	WH w/ Semi Pedestal
<b>Dimensions</b>	Product (mm)	550 x 450 x 195
<b>Material &amp; Color</b>	Material	Vitreous China
	Color	White Heat II
<b>Features</b>	Overflow Hole	With
	Faucet Ledge	Yes
<b>Components</b>	Included	N/A
<b>Shipping</b>	Net Weight (kg)	22
	Gross Weight (kg)	22
	Product Weight (kg)	20
	Dimensions (mm)	580 x 495 x 245